

Frequently asked questions

What is a SenseMaker?

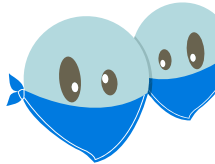
Any citizen who helps an entrepreneur solve his or her challenge (by brainstorming ideas, participating in a Hold-Up or another idea-generating event), like the 20,000 people across the world who are already SenseMakers.

What is a Gangster ?

To become a Gangster, you need to facilitate a Hold-Up to help a social entrepreneur, with the help of available training in the MakeSense process and methods.

On average, it takes 1.5 days to identify the challenge, facilitate a Hold-Up and keep volunteers updated about it before and after.

Can we use MakeSense for any kind of project?



MakeSense prioritises social business projects, tending to a viable and sustainable economic model in the long run. The Hold-Up methodology is under creative commons license: it's open to everyone as long as it is used for non-commercial purposes, credited to MakeSense, and used to solve the challenge of a social entrepreneur.

What is a social entrepreneur?

An entrepreneur whose business' first objective is to tackle a pressing issue faced by society in such areas as health, education, environment, etc. The entrepreneur's activity generates revenues which are reinvested to generate more social impact and scale. You can invite a social entrepreneur to share their project and challenges they face on makesense.org.

What is a challenge?

A problem with which a social entrepreneur needs our help. It could be anything including building his/her business model, communications, strategy, or innovative services.

What are my Superpowers?

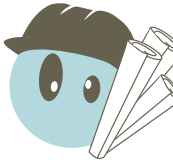


Whatever your skills and background, your ideas and your approach are unique: we think they are Superpowers because they can change the world when helping social entrepreneurs.

Frequently asked questions

MakeSense doesn't exist in my city, what can I do?

In every city of the world where MakeSense is present, someone had one day decided to organize a Hold-Up or a SenseDrink. You can get training to organize a MakeSense event in your city and meet social business enthusiasts like yourself.



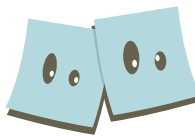
Whom do we do events for?

Our events are all about understanding social and environmental challenges better, promoting social entrepreneurship and solutions, and solving challenges and helping new social enterprises emerge. All our events are open to all, free (with the exception of the SenseCamp), collaborative, and participatory. They should all appear on the Agenda Page.

What is a Hold-Up and how can I organize one?

A Hold-Up is a fun creativity workshop! During the course of 2 hours, 6 to 20 participants are invited to share their most creative and off-the-wall ideas. The facilitator guides participants towards working together to generate 3 concrete solutions to the social entrepreneur's challenge.

Once you have identified a challenge you want to solve, click on "Organize a Hold-Up". You will be put in touch with the social entrepreneur and the MakeSense community developer of your region or city. You will have access to trainings if necessary and the community developer will help you at each stage until you've successfully pulled off your Hold-Up!



How do I follow up with the results of the Hold-Up?

2 weeks after the Hold-Up we ask the social entrepreneur to provide feedback that will appear on the challenge's page. In the next version of the website, the facilitator will be able to upload the solutions, if the social entrepreneur agrees to share them, of course. The social entrepreneur is asked how, if possible, MakeSense can help even further in designing or implementing the solution chosen. Improving the follow-up process of the Hold-Ups is one of our priorities.

Where does the Hold-Up methodology come from?

The Hold-Up methodology is inspired by creativity and design-focused brainstorming tools. Discover the story of the Hold-Up [HERE](#).

Frequently asked questions



What is a Hotspot and how can I kickstart one?

A Hotspot is any city that is actively organizing MakeSense events. To ask for the Hotspot manual, send an email to feedback@makesense.org

I want to use Hold-Up's idea generation methods for my business independently from MakeSense and I want to charge for it

You can offer idea generation facilitation services on your own - there are tons of different methods for idea generation. The Hold-Up manual is under a creative commons licence. You cannot use MakeSense branding and lexicon if it is not done to help a social entrepreneur, or is not made public and free.

You can charge for services using the brand if you do it under a MakeSense licence, meaning you need to sign an agreement with MakeSense to make sure you give back to MakeSense and contribute to its impact. This way we make sure to give back to the community that has created and improved on the MakeSense methodologies.

I would like to establish a partnership between MakeSense and my organization. Who should I contact?

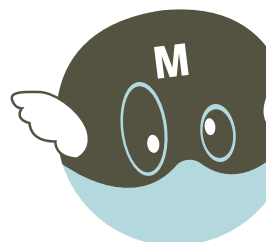
Please send an email to join@makesense.org! Tell us how we can make more impact together!

Why should I join a MakeSense group on Facebook?

There is a MakeSense Facebook group for each Hotspot. It will enable you to get in touch with the local MakeSense community, follow local updates, share local news on social entrepreneurship and participate in organizing of events.

I want to join full-time. Is that possible?

Tell us about your superpowers, and what you want to learn and achieve with us! Send an email to join@makesense.org.



Frequently asked questions

I am planning a worldwide tour to meet social entrepreneurs and I would like to ask MakeSense and the Gang for help to find the social entrepreneurs, partners, welcoming couches...

A SenseTour should be dedicated to establishing Hotspots all over the world, until the most remote regions of the globe are part of the MakeSense community and are able to identify social entrepreneurs and take on their challenges.

If you are planning a worldwide tour and want to find ways to partner with MakeSense, send an email to feedback@makesense.org

I have other questions, how can I contact you?

Send us your questions at feedback@makesense.org



find a challenge, solve it, celebrate